

# Saint Thomas' Episcopal Parish



December 30, 2007  
The First Sunday after Christmas Day (Year A)  
9:00 a.m. and 11:00 a.m.

WHEREVER YOU MAY BE ON YOUR FAITH JOURNEY,  
THERE IS ROOM AT GOD'S TABLE FOR YOU.



# The Holy Eucharist

---

## The Word of God

### Prelude

*In dulci jubilo*

Max Drischner

✠ *A bell rings, all stand.*

Celebrant Blessed be God: Father, Son, and Holy Spirit.

People *And blessed be God's kingdom, now and for ever. Amen*

### Entrance Hymn

*Angels, from the realms of glory*

Hymnal 93

### Collect of the Day

Almighty God, you have poured upon us the new light of your incarnate Word: Grant that this light, enkindled in our hearts, may shine forth in our lives; through Jesus Christ our Lord, who lives and reigns with you, in the unity of the Holy Spirit, one God, now and for ever. **Amen.**

✠ *All are seated*

### First Lesson

*Isaiah 61:10-62:3*

✠ *Sung by all*

Psalm 147:13-16, 20-21 *Laudate Dominum*



13

Jerusalem will worship you, O God, \*  
and Zion will praise your name.

14

For you have strengthened the bars of our gates; \*  
and have blest our children within us.

15

You have established peace on our / borders; \*  
and satisfied us with the finest / wheat.

16

You send out your command to the / earth, \*  
and your word runs very / swiftly.

20

You declares your word to / Jacob, \*  
your statutes and your judgments to / Israel.

21

You have not done so to any other / nation; \*  
to them you have not revealed your / judgments.

**Second Lesson**

*Galatians 3:23-25; 4:4-7*

☒ *All stand and sing three times*

*Zimbabwe Alleluia*



**The Holy Gospel**

*John 1:1-18*

**Sermon**

The Rev. Dr. Nancy Lee Jose

☒ *All stand*

**The Nicene Creed**

BCP, Page 358

**Prayers of the People**

Form IV

BCP, Page 388

**The Peace**

☒ *All are seated*

**Announcements**

# The Holy Communion

---

*St. Thomas' invites all to share in the gifts of bread and wine from God's Holy Table.  
If you do not wish to receive the bread and wine but would like a blessing, please come forward  
and cross your arms with your hands on your shoulders and a priest will provide a blessing.*

---

☒ *All stand*

## Offertory Hymn

*Let all mortal flesh keep silence*

Hymnal 324

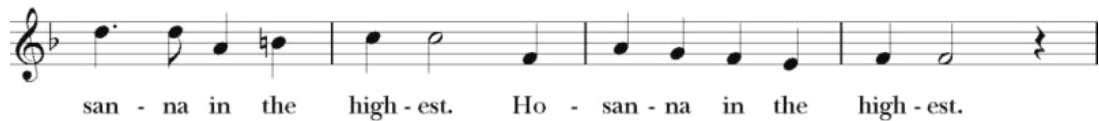
## Eucharistic Prayer C

BCP, Page 369

☒ *Sung by all*

## Sanctus and Benedictus

*Richard Proulx*



## The Lord's Prayer

*Our Father in heaven, hallowed be your Name, your kingdom come, your will be done, on earth as in heaven. Give us today our daily bread. Forgive us our sins as we forgive those who sin against us. Save us from the time of trial, and deliver us from evil. For the kingdom, the power, and the glory are yours, now and for ever. Amen.*

☒ *Sung by all*

### Fraction Anthem

*Alleluia. Christ our Passover*

*Plainsong, Tone VII*

Al - le - lu - ia, Al - le - lu - ia. Christ our Pas - so - ver is sa - cri - ficed for us.  
There - fore let us keep the feast. Al - le - lu - ia, Al - le - lu - ia.

The musical notation consists of two staves of plainsong. The first staff begins with a treble clef, a key signature of one flat (B-flat), and a common time signature. The melody is a simple sequence of notes: A4, B4, C5, D5, E5, F5, G5, A5, B5, C6, D6, E6, F6, G6, A6, B6, C7. The lyrics are placed below the notes. The second staff continues the melody with the same notes: A6, B6, C7, D7, E7, F7, G7, A7, B7, C8, D8, E8, F8, G8, A8, B8, C9. The lyrics are placed below the notes.

☒ *Sung by all*

### Come And Fill Our Hearts

Come and fill our hearts with your peace. You a - lone, O Lord, are ho - ly.  
Come and fill our hearts with your peace, al - le - lu - ia!

The musical notation is in 3/4 time with a key signature of one sharp (F#). It features a vocal line and a piano accompaniment. The vocal line starts with a treble clef and a key signature of one sharp. The piano accompaniment starts with a bass clef and a key signature of one sharp. The lyrics are placed below the vocal line. The first staff contains the lyrics: "Come and fill our hearts with your peace. You a - lone, O Lord, are ho - ly." The second staff contains the lyrics: "Come and fill our hearts with your peace, al - le - lu - ia!"

☒ *All stand*

### Post Communion Prayer

BCP, Page 365

### Blessing

### Final Hymn

*Joy to the World!*

Hymnal 100

## Dismissal

**Celebrant** Go in peace to love and serve the lord.

**People** *Thanks be to God.*

✠ *All are seated*

## Postlude

*Vom Himmel hoch da komm' ich her, BWV 700* Johann Sebastian Bach



**ST. THOMAS' PARISH**  
DUPONT CIRCLE ✦ WASHINGTON, DC

We're a **community of Christians on a spiritual journey**. Our worship and *life together* provides a pathway towards a deeper understanding of the risen and transforming Christ. Through joyful singing, engaging preaching, prayer and silence, we come together to share in **one bread, one body**.

**A place to find and be found by God.**

*The People of St. Thomas'*

**Vestry**

*John Carter, Senior Warden; Barbara Hays, Junior Warden  
Michael Bell, Knight Champion, Dan Costello, Camille Blake Fall, Brad Latham,  
Mike Mattmiller, E. Strother Murray, Kristin Queen Shaffer, David Swanson*

St. Thomas' Parish ✦ 1772 Church Street NW ✦ Washington, DC 20036  
[www.stthomasdc.org](http://www.stthomasdc.org)

<b>Parish Office Hours 8:15 a.m. – 4:15 p.m. M-F</b>	<b>202-332-0607</b>
Ms. Emily McGrath, Nursery Attendant Ms. Evelyn McMillan, Coffee Steward Mr. Esteban Mares, Sexton Ms. Cindy Pettigrew, Parish Executive Secretary Mr. Timothy Hagy, Music Director	<a href="mailto:emmcgrath@gmail.com">emmcgrath@gmail.com</a> <a href="mailto:evelyn.mcmillan@earthlink.net">evelyn.mcmillan@earthlink.net</a> <a href="mailto:maresbravo@aol.com">maresbravo@aol.com</a> <a href="mailto:info@stthomasdc.org">info@stthomasdc.org</a> <a href="mailto:timhagy@comcast.net">timhagy@comcast.net</a> or <a href="mailto:musician@stthomasdc.org">musician@stthomasdc.org</a> <a href="mailto:kjohnson@stthomasdc.org">kjohnson@stthomasdc.org</a> <a href="mailto:jdwyer@stthomasdc.org">jdwyer@stthomasdc.org</a> <a href="mailto:rector@stthomasdc.org">rector@stthomasdc.org</a>
The Rev. Kay Johnson, Priest Associate The Rev. John Dwyer, Assistant Rector The Rev. Dr. Nancy Lee Jose, Rector	
The Right Reverend John Bryson Chane Bishop of Washington	<a href="mailto:jchane@edow.org">jchane@edow.org</a>